

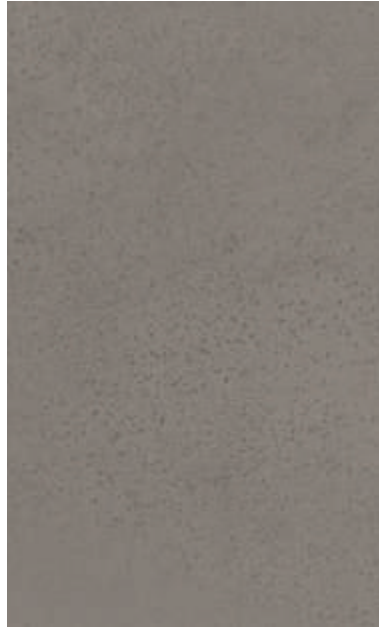
Hoover Stone

TRANSFORM **DS**



7000

46916



7200

46926



7500

46957



7900

46979

TECHNICAL SPECIFICATIONS

Collection	Transform DS	M² per Box	3.72m ²
Type	Vinyl Plank	M² per Pallet	141.36m ²
Plank Thickness	2.5mm	Surface	Rough Sand Emboss
Dimensions	609.6mm (L) x 609.6mm (W)	Profile	Micro Bevel
Wear Layer	0.55mm	Protective Coating	Protectonite®
Planks per Box	10	Finish	Matte
Colours	4	Installation Method	Direct Stick

PERFORMANCE SPECIFICATIONS

Abrasion Rating	Group T	EN 660-2		
Classification	23, 33, 42	EN ISO 10874		
Dimensional Stability	≤0.05%	EN ISO 23999		
Residual Indentation	Norm: ≤0.10mm, 0.03mm	EN ISO 24343-1		
Castor Chair	No Damage	EN ISO 4918		
Light Fastness	≥6	EN ISO 105-BO2		
Light Reflectance Values	7000 46916-31	7200 46926-21	7500 46957-14	7900 46979-9
Slip Resistance	P2, R10	AS/NZ 4586		
Residential Warranty*	25 Year Moduleo Residential Warranty			
Commercial Warranty[†]	10 Years available upon request			
Reaction to Fire	CRF 6.4 kW/m ² Smoke Value 130% Min	EN ISO 9239		
Recommended Adhesive	Refer to the Moduleo™ installation guidelines available at www.moduleo.com.au			

SUSTAINABILITY SPECIFICATIONS

Indoor Air Quality	Green Building Council compliant for VOC emission rate limits
---------------------------	---



As part of the Mohawk Industries Inc. family, Godfrey Hirst has access to products and resources, including the high quality Moduleo™ product offering from the IVC Group.

Manufactured under a quality and environmental system as complying with ISO9001 and 14001. Test results and certificates are available on request. Specifications and colourations are subject to manufacturing tolerances.

As part of Godfrey Hirst's continuous improvement process, Godfrey Hirst reserves the right to change the specifications of or delete colours of this product without notice. All Moduleo™

floors must be installed in accordance with the relevant Australian Standards and in conjunction with the Moduleo™ Installation Instructions.

*This product comes with a residential warranty for new product installed indoors in a residential home, if properly installed and maintained. This warranty is in addition to consumers' rights under the statutory consumer guarantee provisions in the Australian Consumer Law, which may exceed the rights under this warranty. The amount recoverable under the warranty decreases after five years. For full information in respect to the scope and limitations of this warranty, please

refer to the to the full terms and conditions available from your retailer, by calling 1300 444 778, or by download from www.moduleo.com.au.

[†]Terms and conditions apply to all commercial warranties – contact your Godfrey Hirst account manager.